



[HOME](#) | [CATALOGUES](#) | [CONTACT](#) | [SHOP](#)

Dear Madam or Sir,

This year we look forward to celebrating the 40th anniversary of our family run business SM Motorenteile GmbH. We have worked our way through ups and downs over the last few decades, but without you, our loyal customers, we would not have been this successful in the aftermarket and OE series production for so many years. We therefore express our heartfelt gratitude for your support and loyalty, which has enabled us to look back on 40 years of shared success.

You can continue to look forward to high precision manufactured components, a warm and welcoming SM family, and a successful future together.



Have fun reading!

Oliver Schöttle and the entire Team of SM Motorenteile GmbH

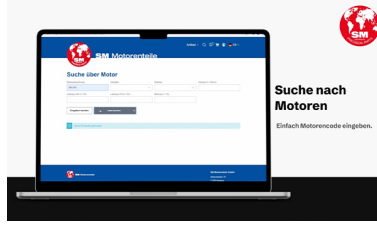
[info@sm-original-germany.com](mailto:info@sm-original-germany.com)

---

TOPICS | CURRENT



[40 YEARS OF SM  
ENGINE PARTS >>>](#)



[NEW FILTER  
WEBSHOP >>>](#)



[40 YEARS OF SM  
EMPLOYEE  
CELEBRATION >>>](#)

**UNDER  
DEVELOPMENT**



[UNDER  
DEVELOPMENT >>>](#)

**NEW  
ITEMS IN STOCK**



[NEW ITEMS IN STOCK  
>>>](#)



[IMPORTANT  
APPOINTMENTS >>>](#)

## QUALITY SINCE 1984 - THE FIRST DECADE OF SM ENGINE PARTS

Since our founding in 1984, we have dedicated ourselves to producing world-class engine parts. That's why, despite a constantly changing world, we have consistently accompanied you over the last 40 years.

With over one million installed piston rings and a product range of more than 10,000 items, we are proud to say that our products are synonymous for quality and reliability worldwide.

Our journey began 40 years ago, initially under the name MVI Motorenteile, we focused on the provision of valve train parts to complement the existing piston ring program of Schöttle Motorenteile GmbH, founded and managed by Mr. Wolfgang Schöttle. By the end of the 1980s, we expanded our business strategy and product portfolio setting up an international sales network still actively growing to the present day. By establishing our own high standards for quality and continuous development, we have laid the foundation for our comprehensive spare parts program for European and Asian engines in the first decade.

As a family business, we are proud to have been your trusted partner for 40 years and are committed to continue offering the highest quality and customer satisfaction. Immerse yourself in 40 years of company history with us!

[back >>](#)



SM ENGINE PARTS FROM 1984-1994

---

## NEW IMPROVED FEATURES FOR THE PRODUCT SEARCH IN OUR WEB-SHOP!

We are delighted to introduce you to our new product-search features in our web-shop. Our how-to video will show, how you, as an existing B2B customer, can search for specific items, engines, and vehicles and find the right product for your needs. Our new filter and search options will make ordering that much easier! Improve your shopping experience and take advantage of our web-shop, please contact us if you are not yet familiar with our web-shop and would like to start today.

[back >>](#)



### Web-shop new features

**New filter functions for reference numbers,  
competitor reference numbers, engines,  
vehicles, and dimensions.**

[To the web shop with new filter functions »](#)

## NEW DEVELOPMENTS IN SM MOTORENTEILE

To keep up to date with the latest technologies and supply our global markets in the best possible way, we are constantly expanding our product portfolio through new developments.

We are currently developing new engine parts such as piston rings, pistons, cylinder liners and assemblies, valve train parts and engine bearings. Now available for pre-order.

### **Engine Bearings:**

[Citroen Eng. YHR \(DV5RUCd\) / YHS \(DV5RCE\) / YHV \(DV5RUC\) / YHW \(DV5RE\) / YHX \(DV5RC\) / ...](#)

[DS Eng. YHS \(DV5RCE\) / YHY \(DV5RD\) / YHZ \(DV5RC\)](#)

[Opel Eng. D 15 DT \(DV5RD\) / D 15 DT \(DV5RUCD\) / D 15 DTH \(DV5RC\) / D 15 DTH \(DV5RUC\) / ...](#)

[Peugeot Eng. YHR \(DV5RUCd\) / YHS \(DV5RCE\) / YHV \(DV5RUC\) / YHW \(DV5RE\) / YHX \(DV5RC\) / ...](#)

[Toyota Eng. 5WZ-HV \(DV5RUC\) / 5WZ-TV \(DV5RUCD\) / DV5RC / DV5RD / DV5RE](#)

[Vauxhall Eng. D 15 DT \(DV5RD\) / D 15 DT \(DV5RUCD\) / D 15 DTH \(DV5RC\) / ...](#)

### **Piston Rings / Pistons / Cylinder Liners and Assemblies:**

[Audi Eng. AHL / ALZ / ANA / AVU / AVU / BFQ / BGU / BSE / BSF](#)

[Hyundai Eng. G4FA](#)

[Kia Eng. G4FA](#)

[Seat Eng. ALZ / BFQ / BGU / BSE / BSF / CHGA](#)

[Skoda Eng. AVU / BFQ / BGU / BSE / BSF / CHGA](#)

[VW Eng. AHL / ALZ / ANA / AVU / AYD / BFQ / BFS / BGU / BJH / BSE / BSF / CHGA](#)

### **Valve Train Parts**

[Caterpillar Eng. 3406](#)

[Citroen Eng. YHR \(DV5RUCd\) / YHV \(DV5RUC\) / YHW \(DV5RE\) / ...](#)

[Dacia Eng. H4B 400 / H4B 405 / H4B 408 / H4B 410 / H5F 402 / H5F 404 / H5F 410](#)

[DS Eng. YHY \(DV5RD\) / YHZ \(DV5RC\)](#)

[Fiat Eng. 8040.04.200 / 8040.04.280 / 8040.05.200 / 8040.05.230 / ...](#)

[Fiat Eng. 8060.25.661 / 8060.25.662 / 8060.25.663 / 8060.25.669 / ...](#)

[Iveco 8040.25B.4200 / 8040.25B.4220 / 8040.25X.4000 / 8040.25X.4010 / ...](#)

[Iveco Eng. 8060.04.051 / 8060.04.055 / 8060.04.060 / 8060.04.070 / ...](#)

[Mercedes Benz Eng. M 200.711](#)

[Nissan Eng. H4B 408 / HR09DET / HR12DDT / HRA2DDT](#)

[Opel Eng. D 15 DT \(DV5RD\) / D 15 DT \(DV5RUCD\) / D 15 DTH \(DV5RC\) / ...](#)

[Peugeot Eng. YHR \(DV5RUCd\) / YHV \(DV5RUC\) / YHW \(DV5RE\) / YHX \(DV5RC\) / ...](#)

[Porsche Eng. M 96.03](#)

[Renault Eng. H4B 400 / H4B 401 / H4B 408 / H5F 400 / H5F 403 / H5F 404 / ...](#)

[Smart Eng. H4B 409 / M 281.910](#)

[Toyota Eng. 5WZ-HV \(DV5RUC\) / 5WZ-TV \(DV5RUCD\)](#)  
[Vauxhall Eng. D 15 DT \(DV5RD\) / D 15 DT \(DV5RUCD\) / ...](#)

For further new product developments »

[back >>](#)

## NEW ITEMS IN STOCK

As a result of our continuous program extension, we now have new references for Piston Rings, Pistons, Cylinder Liners, Assemblies as well as Valve Train parts and Engine Bearings. Now available in stock!

### **Piston Rings / Pistons / Cylinder Liners and Assemblies**

[Citroen Eng. 5FX \(EP6DT\) / 5FY \(EP6DTS\)](#)

[Citroen Eng. YHR \(DV5RUCd\) / YHS \(DV5RCE\) / YHV \(DV5RUC\) / YHT \(DV5RCF\) / YHW \(DV5RE\) / YHX \(DV5RC\) / YHY \(DV5RD\) / YHZ \(DV5RC\)](#)

[DS Eng. YHS \(DV5RCE\) / YHY \(DV5RD\) / YHZ \(DV5RC\)](#)

[Ford Eng. BEGA / BEDC / Z2DA / Z2GA / Z2JA / ZTDA / ZTDB / ZTGA / ZTJA / ZTJB](#)

[Komatsu Eng. 4D95](#)

[Mini Eng. N14 B16 A](#)

[Opel Eng. D 15 DT \(DV5RD\) / D 15 DT \(DV5RUCD\) / D 15 DTH \(DV5RC\) / D 15 DTH \(DV5RUC\) / D 15 DTL \(DV5RE\) / ...](#)

[Peugeot Eng. 5FV \(EP6CDT\) / 5FX \(EP6DT\) / 5FY \(EP6DTS\)](#)

[Peugeot Eng. YHR \(DV5RUCd\) / YHS \(DV5RCE\) / YHV \(DV5RUC\) / YHT \(DV5RCF\) / YHW \(DV5RE\) / YHX \(DV5RC\) / ...](#)

[Toyota Eng. 1Z](#)

[Toyota Eng. 5WZ-HV \(DV5RUC\) / DV5RC / DV5RD / DV5RE](#)

[Vauxhall Eng. D 15 DT \(DV5RD\) / D 15 DT \(DV5RUCD\) / D 15 DTH \(DV5RC\) / D 15 DTH \(DV5RUC\) / D 15 DTL \(DV5RE\) ...](#)

### **Valve Train Parts**

[Volvo Eng. D9A260 / D9A300 / D9A340 / D9A380](#)

[Volvo Penta Eng. TAD940VE / TAD941VE / TAD942VE / TAD943VE](#)

Further new developments available from stock »

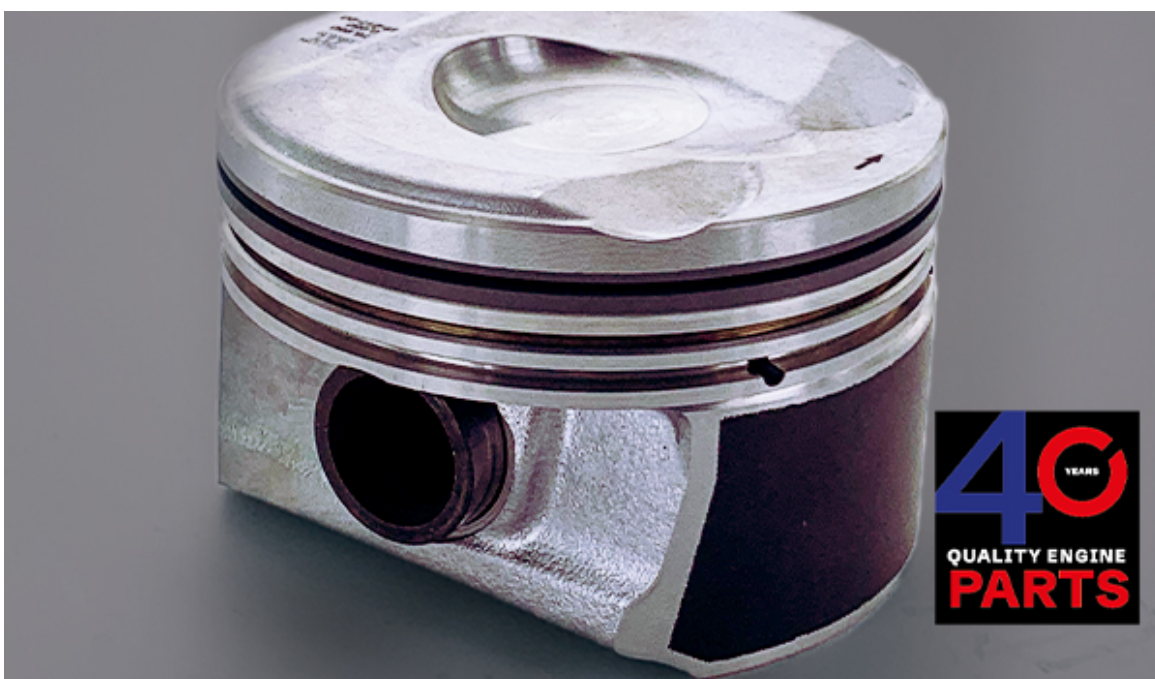
---

DO YOU STILL KNOW ME...



We always have cylinder liner [951001-1](#) (without seal set) and [951001-2](#) (with seal set) in our product range for you. It is employed in the current Mercedes-Benz Euro 6 engine OM471LA, in the Actros MP4/5, among others, and found in the Japanese Fuso truck with engine designation 6R10. Please contact our sales team for more information.

DO YOU ALREADY KNOW ME...



For the small, powerful 1.6 litre 16V engines N14B16A for the Mini Cooper S and PSA 5FV, we now have the piston in standard ([800731-00-1](#)) and 0.50 mm oversize ([800731-50-1](#)) available from stock. We look forward to receiving your order.

[back >>](#)

# INTERNAL

"Working in the Sales Service at SM Motorenteile is exciting and varied. We deliver worldwide, and every country has its own unique characteristics. Nice colleagues and superiors who treat each other with respect and appreciation, as well as intensive training, show how professionally work is carried out at SM Motorenteile. Our focus is always on ensuring customer satisfaction, and as I enjoy communicating in English, I particularly enjoy looking after international customers."



Olga Gassmann, Sales Service

"I really enjoy working at SM Motorenteile because here I experience an inspiring environment in which my work is valued, and my development is encouraged. The open communication and trust that prevails create a positive atmosphere in which I have fun getting involved. At SM Motorenteile I not only feel like I am part of a company, but also part of a family that celebrates successes and supports each other."

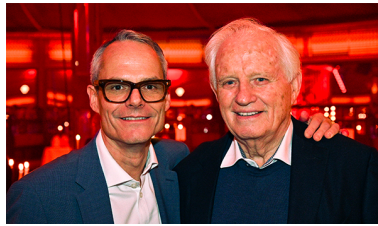


Bernadette Dieterle, Marketing

---

## UNFORGETTABLE EVENING: 40TH COMPANY ANNIVERSARY AT HARALD WOHLFAHRTS PALAZZO STUTTGART

[back >>](#)



Our staff anniversary was a radiant celebration full of joy, warm encounters, and acrobatic highlights. From the sparkling circus ring to the festively laid tables, every moment was magical. Our shared spirit made this evening an unforgettable experience. Thank you to all our colleagues who made this event a wonderful evening!

---

## IMPORTANT DATES | OPENING HOURS

SAVE THE DATE: Visit us at Automechanika Frankfurt from 10-14 September 2024 in Hall 5.1 - C59

We are closed on the following days due to public holidays and subsequent bridging days in Germany:

29.03.2024 - 01.04.2024

01.05.2024

09.05.2024 - 12.05.2024

20.05.2024

30.05.2024 – 02.06.2024

[back >>](#)



You do not want to receive the newsletter? [Here](#) you can log off.

SM Motorenteile GmbH

Premises: Asperg | registration court Stuttgart HRB3701350

represented by W., O. Schöttle

Alleenstr. 70 | 71679 Asperg - Germany

Tel: +49 (0)7141 2047-0 | Fax: +49 (0)7141 2047-16

[info@sm-original-germany.com](mailto:info@sm-original-germany.com) | [www.sm-original-germany.com](http://www.sm-original-germany.com)

[Data privacy](#)

Photos: SM Motorenteile, Fotolia